



Forging Success in Application Development

Simplified Integration, Maximized Reuse

Collabrasuite SDK is the ultimate launch pad for the rapid development of robust J2EE-based solutions that can integrate new and existing applications within a seamless collaborative environment.

With its highly customizable application architecture, model driven approach, and library of reusable software modules, Collabrasuite SDK both simplifies and speeds development at every stage.

The result?

Application development lifecycle and costs are dramatically reduced, as is overall project execution risk, thanks to a proven solution that simplifies integration and maximizes reuse opportunities. Most importantly, Collabrasuite SDK consistently delivers high-quality custom solutions in even the most complex environments.

A Complete Development Environment in Three Basic Components

Application Framework

Gives developers the time advantage of focusing just on business problems at hand instead of on framework or infrastructure issues common to J2EE applications.

Application Jumpstart

Provides a complete development environment, reusable software modules, and a source code tree for optimized productivity.

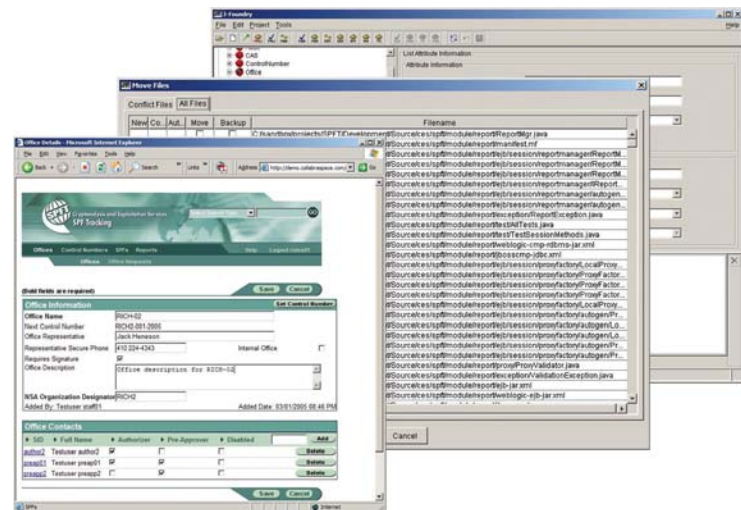
Application Modeler

Leverages a model-driven approach to application development, complete with an integrated code generator to write complex infrastructure code, along with a roadmap for developing custom code.

Measurable Results

- *Significantly lower cost and time to market (50–70%)*
- *Significantly reduced maintenance time and cost by (40–70%)*
- *An effective solution for integrating legacy applications into a collaborative environment*
- *Reduced project execution risk*
- *Improved consistency and quality*
- *Increased reliability, scalability, and maintainability*

Seamlessly Integrating J2EE-Based Collaboration Solutions



Rapid development delivered in days, not months.

