



CollabraSuite

Basic Edition

Virtual High Performance Workplace

CollabraSuite Basic Edition is a Web based, commercial off the shelf collaboration application that provides a virtual work environment with a full featured robust chat /instant messaging (IM) functionality and presence awareness in a secure, high performance workplace.

Share as One. Think as One. Succeed as One.

With CollabraSuite, no matter how geographically dispersed your operation may be, the right people, data, and resources can always Connect as One on any issue. Working as One. Working without boundaries.

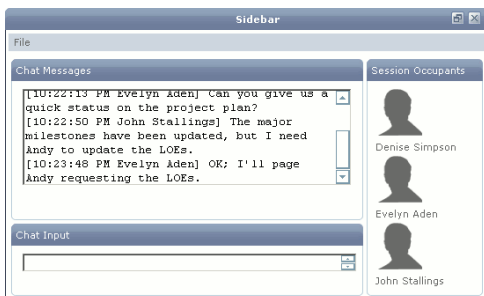
In many organizations and communities of interest, the need to quickly and efficiently communicate is paramount. Whether your organization needs faster time to market or must respond to mission critical issues, it is all about connecting to the right people at the right time.

CollabraSuite Basic Edition includes the following features:

- ◆ Text Chat/Instant Messaging (IM)
- ◆ Presence Awareness
- ◆ Multiple Room Environment
- ◆ Integration APIs

Text Chat /Instant Messaging - Users can engage in timely group discussions or one-on-one communications. All text chat is recorded in a customer designated database and can be searched for re-use or as a context for discussion history.

- ◆ Sidebar Chat
- ◆ Public Chat
- ◆ Directed Chat
- ◆ Chat Priorities
- ◆ Mark Chat
- ◆ Manual Scrolling
- ◆ URL Launch



Multiple Room Environment

Using the room navigator, users can move through the campus to the appropriate location with ease. Using the room locking feature, users can instantly restrict access to a room for real-time, sensitive discussions.

Remote Campus Access - Enables multiple organizations to connect via remote campus access. This feature is offered for organizations that want to collaborate with a subset of users from one or more authorized remote campuses.

Integration APIs - Effective collaborative environments bring people together and must provide access to important data by tightly integrating with other existing or future, business critical systems.

CollabraSuite provides an Application Programming Interface (API) to facilitate this integration. APIs allow developers to seamlessly weave existing data and current/future systems into their collaborative environment adapting to the changing environment.

Auditability - CollabraSuite provides comprehensive reporting on collaboration activities within its environment. Audit reports produced can be used to view information about the usage of the system and its performance. Administrators have the ability to review sessions and filter reports by start time, end time, user and more.

Presence Awareness - Users can rapidly identify people actively participating in the collaborative environment. There are three presence awareness features: room occupants, online users and associates/buddy list. Other users, online or offline, may be found based on individual skill sets.

- ◆ Room Occupants
- ◆ Associates/Buddy List
- ◆ Idle Presence Status
- ◆ User Profiles
- ◆ Skill Search



CollabraSpace
Revolutionary Collaboration

Sidebar Chat - The sidebar text chat is a private instant message. The sidebar provides a mechanism for users to have private text discussions with users. It is archived and can be retrieved as needed.

Public Chat - Users within CollabraSuite are able to collaborate with text chat that is date/time/user stamped. Public chat is exchanged among users, creating a communication channel for direct discussion. Public text chat allows virtual communities and team members to share and exchange thoughts and ideas in a public forum in real-time.

Directed Chat - Allows users to direct their chat message to specific users during a public chat session.

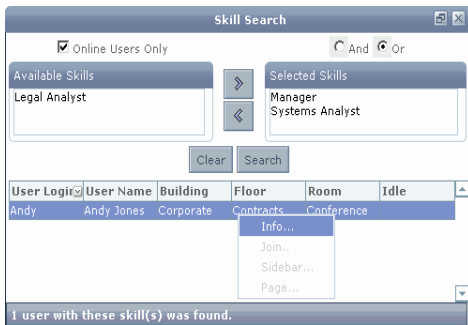
Chat Priorities - This feature allows users to assign priorities to certain messages by using color tags and icons. Users may then use this feature to view and sort messages based on high, medium, or low priority.

Mark Chat - This feature marks the messages in your current view as having been read. This is beneficial in rooms containing fast paced textual discussions, as it helps users to quickly focus on new chat messages.

Manual Scrolling - CollabraSuite provides users with the ability to enable or disable real-time chat message updates. Users can scroll through room chatter as it is being posted or review previous chatter at their convenience. This allows users to review discussions held prior to entering the room.

URL Launch - Users may drag and drop or type URLs into the text chat which will then create a link within the chat window, directing users to web pages that have relevance to the discussion.

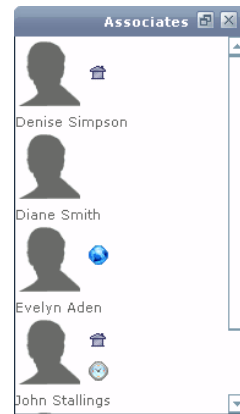
Skill Search - CollabraSuite enables users to identify personnel with a particular skill set. Enabling users to locate others based on skill facilitates both knowledge sharing and problem solving.



Profile Manager/User Information - Users can manage their own profile. Account information such as name and user icon are overseen by the individual user. The account owner maintains their default room, contact information, and skills. Information concerning other users can be viewed by browsing the user list in the personal information management tool.

Idle Presence Status - While online, this feature alerts other online users that you are away or unable to respond at that time.

Associates/Buddy List - While in the collaborative environment, users may encounter and come in contact with many other users. To aid in more efficient collaboration, users may set an associates list to include users that they frequently collaborate with, including users in accessible remote campuses. The associates component allows users to view detailed presence awareness information about those associates.



Room Occupants - The room occupants component provides a visual indication of other users in the CollabraSuite environment. When a user logs into the environment, their presence is indicated in the room occupants component. Users get a choice of seeing either a detailed list of users in the online environment or image icons. The room occupants list also allows a user to pull up contact information for users or send them a sidebar chat.

About CollabraSpace

CollabraSpace is a leading provider of real-time, web-based collaboration solutions that become part of the fabric of an organization, transforming the way its members and communities of interest communicate and collaborate. CollabraSpace develops secure software and J2EE application development platforms that include audio/video sharing, file sharing and storage, whiteboarding and instant messaging. More information can be found at www.collabraspace.com